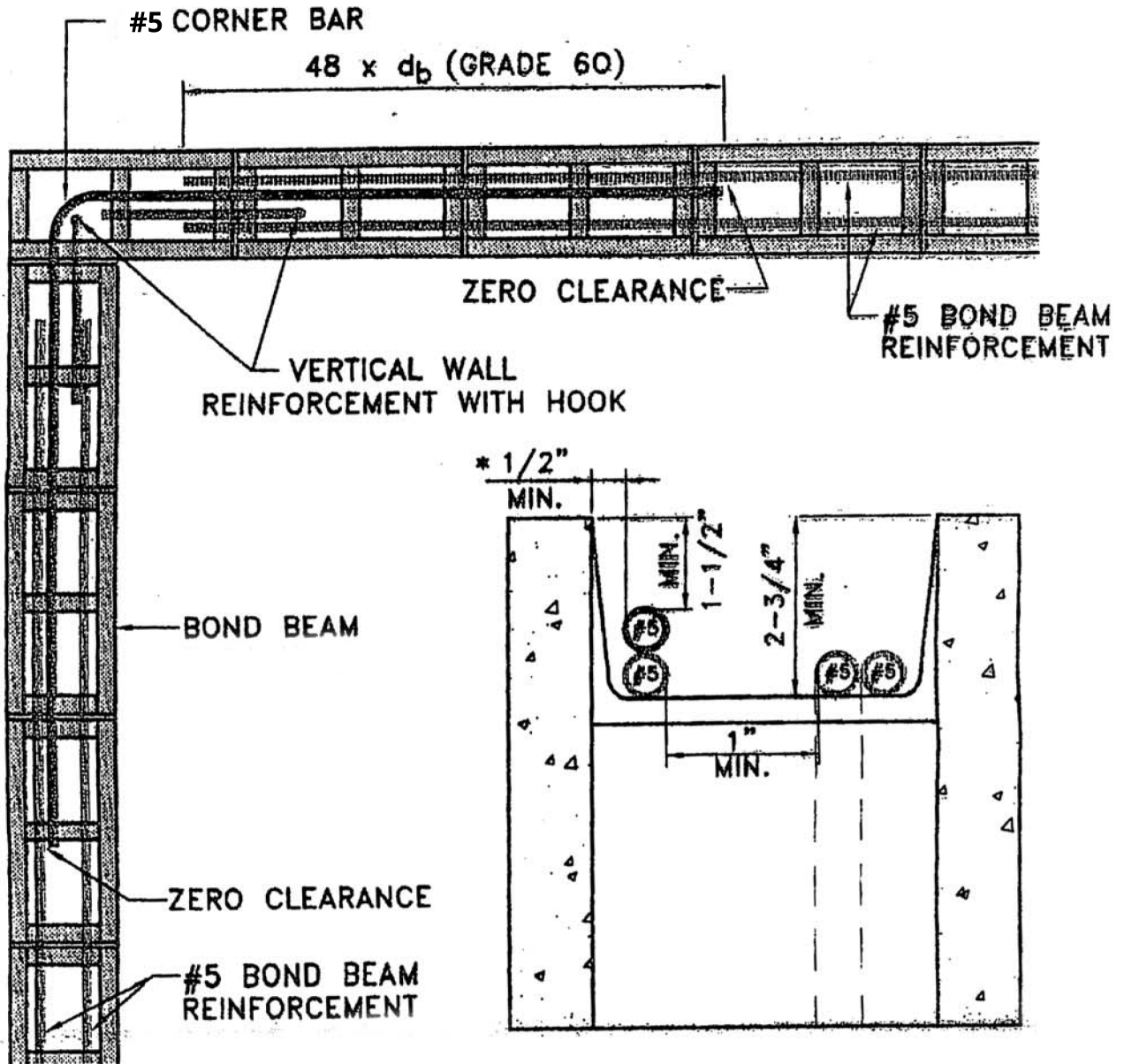


Scale Drawing # 5 rebars can be stacked in NEW (2 3/4") bond beam block



NOTE: REINFORCING BARS SHALL HAVE A MINIMUM OF 1-1/2" CONCRETE COVER.

* 1/2" CLEARANCE ALLOWS USE OF COURSE AGG. GROUT PER TMS 602

PLAN (Proposed Unit)

TYPICAL BOND BEAM CORNER DETAIL
(TWO #5 REINFORCING BARS IN BOND BEAM)