

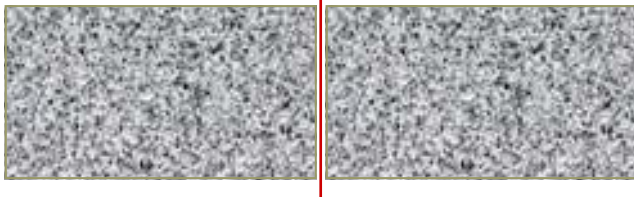
Function of a Control Joint

Definitions:

Control Joint:

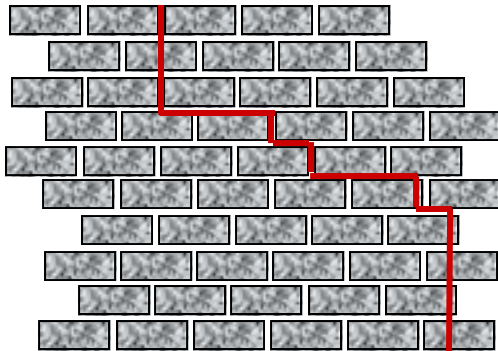
A continuous un-bonded masonry joint to regulate the location and amount of separation resulting from the dimensional change of different parts of a structure as to avoid the development of excessively high stresses.

With Control Joint:



A control joint introduces a "CONTROLLED" Crack.

Without Control Joint:



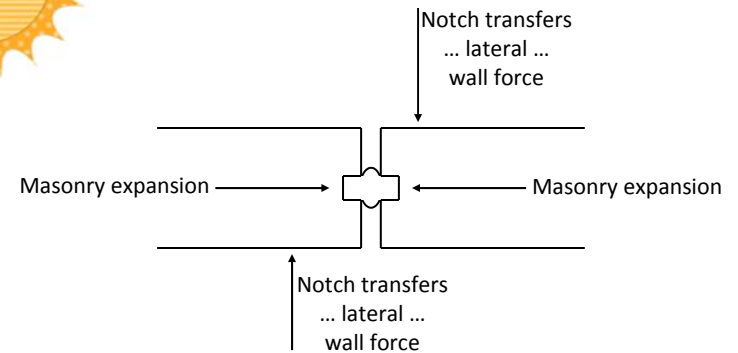
No control joint results in "UN-CONTROLLED" cracking.

Expansion Joint:

A separation between adjoining parts of a masonry structure which is provided to allow small relative movements such as those caused by thermal changes, to occur without one part affecting an adjacent part.



Heat of Day Expands Masonry



Cool of Night Makes Masonry Contract

